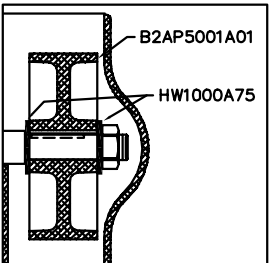
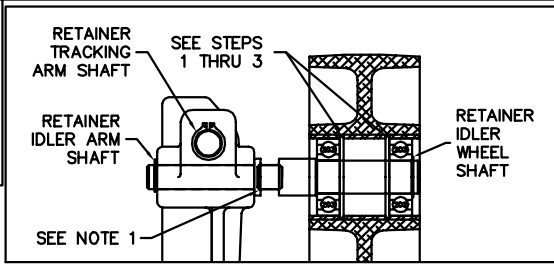
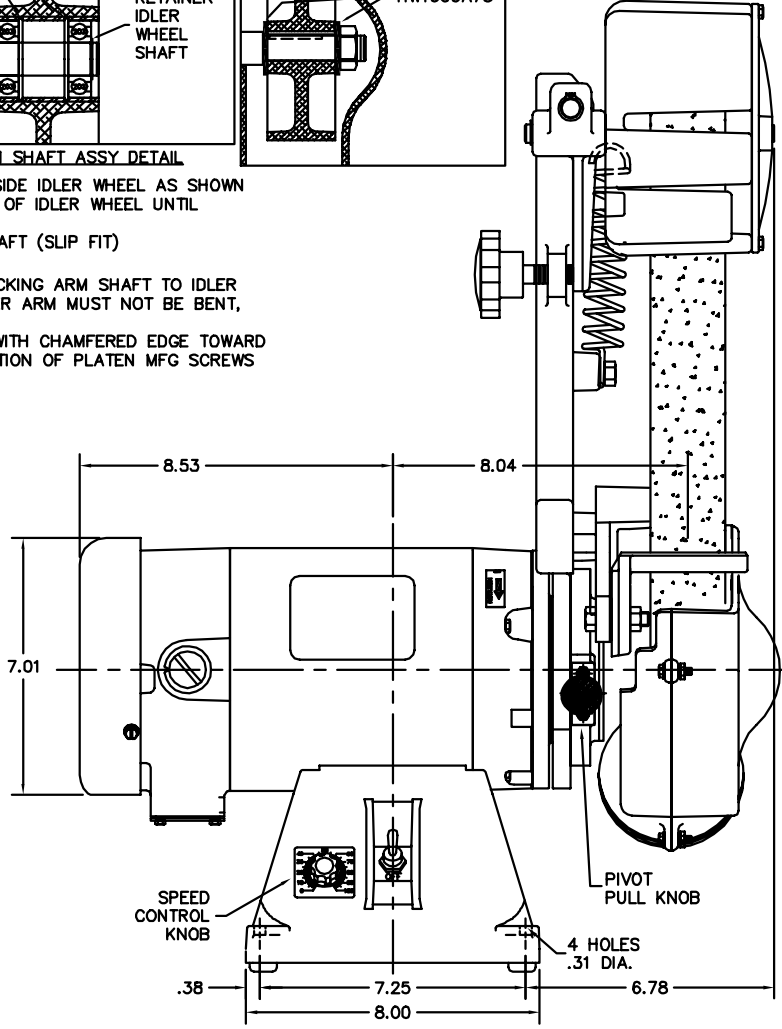


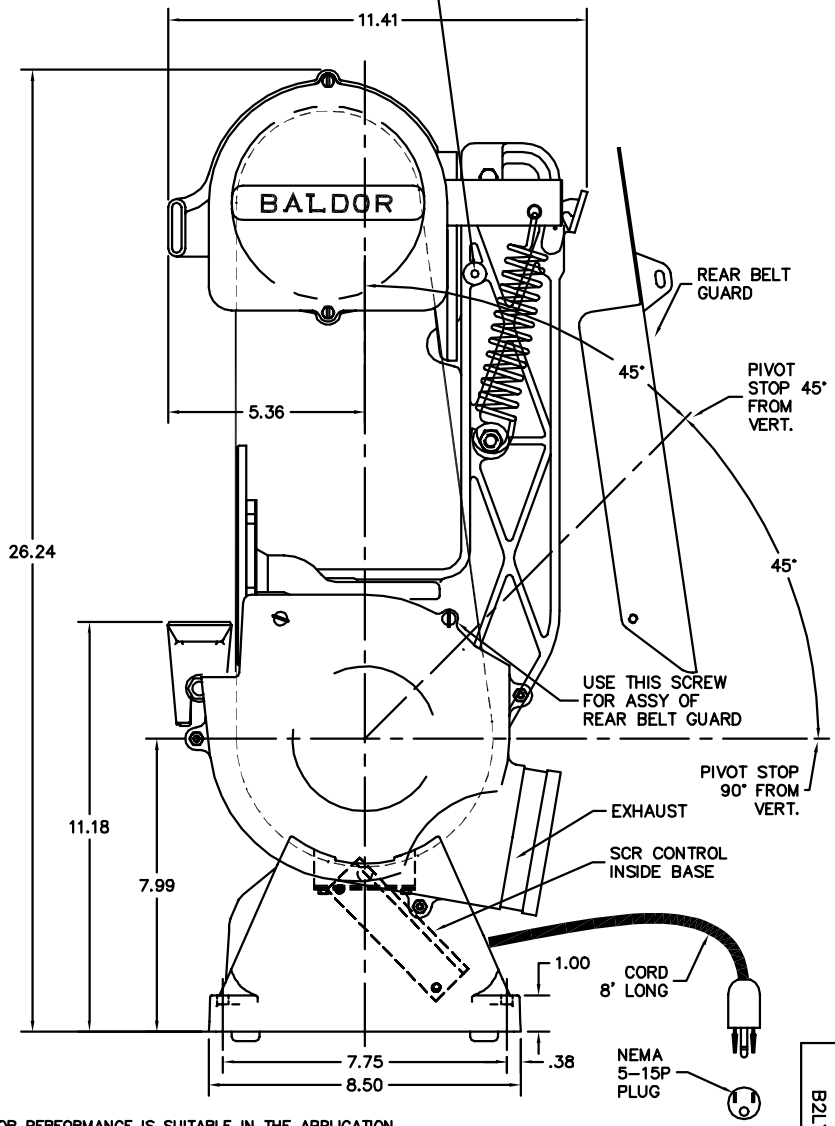
B2LY0008



- STEPS: IDLER WHEEL/TRACKING ARM SHAFT ASSY DETAIL**
1. PLACE INSIDE RETAINER RINGS INSIDE IDLER WHEEL AS SHOWN
  2. PRESS BEARING IN AT EACH END OF IDLER WHEEL UNTIL IT ENGAGES RETAINER
  3. ASSEMBLE IDLER WHEEL ONTO SHAFT (SLIP FIT)
- NOTES:**
1. WELD IDLER WHEEL SHAFT & TRACKING ARM SHAFT TO IDLER ARM AS SHOWN PER DETAIL. IDLER ARM MUST NOT BE BENT, BUT MUST BE STRAIGHT
  2. ASSEMBLE PLATEN TO BRACKET WITH CHAMFERED EDGE TOWARD BELT. GRIND OFF EXTENDING PORTION OF PLATEN MFG SCREWS FLUSH WITH PLATEN



ASSEMBLE REAR BELT GUARD HERE USING 93XN1032A08 SCREW



CUSTOMER IS RESPONSIBLE FOR DETERMINING THAT MOTOR PERFORMANCE IS SUITABLE IN THE APPLICATION.

REV. DESC: LD5024A02 WAS ML6001C10 AND WD1400A01		
REV. LTR: N	VERSION: 01	TDR: 000000382705
FILE: \AAA\00050\691	REVISED: 09:07:44 12/06/2005	BY: ENCHRC0
MTL: -		

**BALDOR ELECTRIC Co.**

PIVOTAL BELT GRINDER 35PM FRAME

B2LY0008