

1

2

3

4

5

6

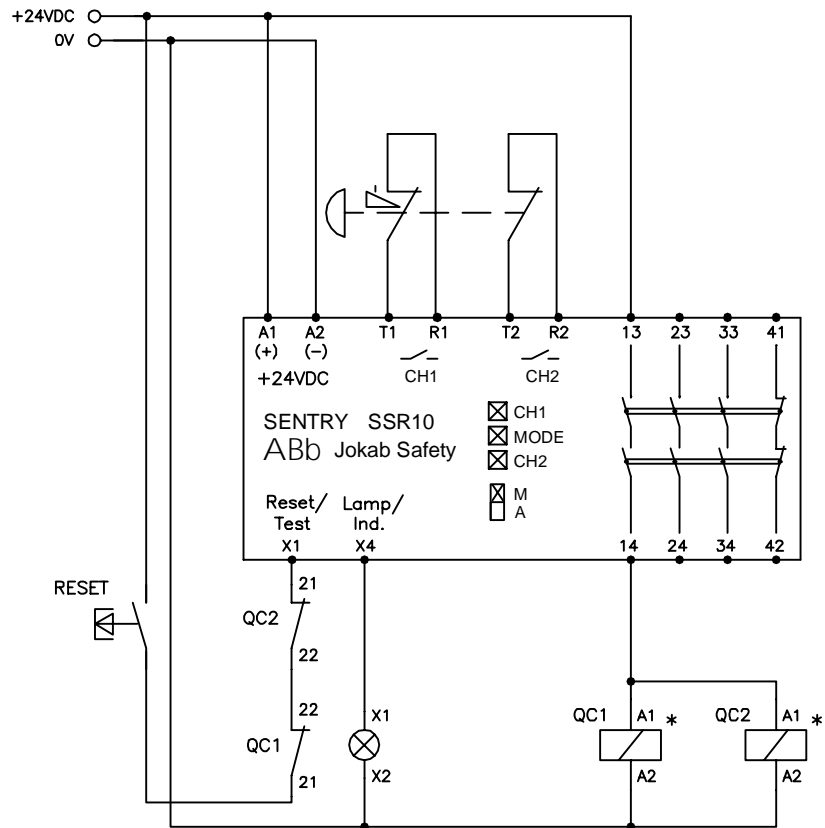
7

8

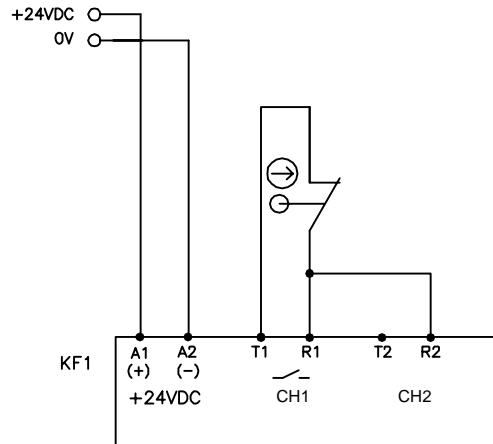
9

10

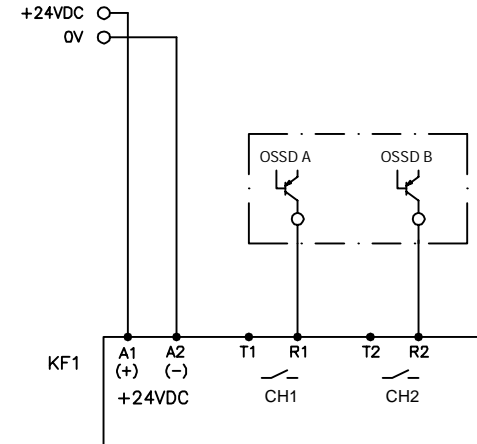
A) Two signals from T1/T2



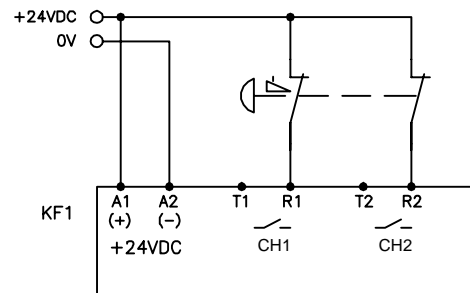
B) One signal from T1



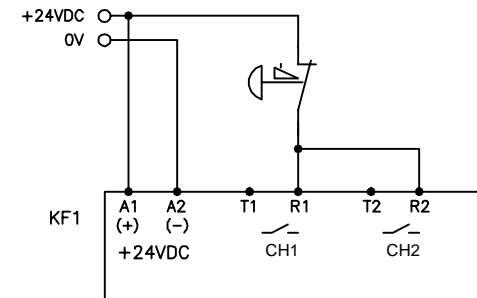
C) Two OSSD-signals



D) Two signals from +24 VDC



E) One signal from +24 VDC



* NOTE! Always use
transient suppressors with
inductive loads

Anmärkning Remark

CONNECTION EXAMPLE SSR10

ABB Jokab Safety

Konstr Design	Godk Appr	Datum Date	Blad Sheet
ABB		20160706	
Ritad Drawn	Sidor Pages	Ritn nr Drawing no	Forts Cont
ABB		2TLC010007T0001	